

# LOW VOLTAGE PCKELS CELL DRIVERS – DP

## Features

- HV pulse amplitude up to 3.6 kV
- Repetition rate up to 2 MHz
- HV pulse duration extension using pulse regeneration technique
- Alternative aluminum case option featuring conductive cooling possibility and relocated water and HV output connectors
- OEM version available upon request



Standard of DP/DP-SP series Pockels cell driver

## Configuration samples of DP series drivers

CATALOGUE NUMBER OF DRIVER	DP-50-3.6-AI	DP-250-3.6-AI	DP-500-2.6-AI	DP-1000-1.8-AI	DP-2000-1.5-AI
Maximal HV operating voltage	3.6 kV	3.6 kV	2.6 kV	1.8 kV	1.5 kV
Maximal HV repetition rate	50 kHz	250 kHz	500 kHz	1000 kHz	2000 kHz
Pulse duration	100 – 5000 ns				
HV pulse rise time, typical	< 7 ns	< 7 ns	< 6.5 ns	< 6 ns	< 7 ns
HV pulse fall time, typical	< 7 ns	< 7 ns	< 6.5 ns	< 6 ns	< 7 ns
Output polarity	Positive				
HV power consumption	< 20 W	< 75 W	< 90 W	< 80 W	< 120 W
24 V power consumption	< 1 W	< 4 W	< 6 W	< 9 W	< 12 W
Recommended HV power supply model	PS-40 or HVS100-40	PS-80 or HVS100-80	PS-120 or HVS100-120	PS-80 or HVS100-80	PS-120 or HVS-120
Dimensions	Standard - see Fig. 15, alternative – see Fig. 16 <sup>1)</sup>				
Cooling	Water <sup>2)</sup>				

<sup>1)</sup> If alternative aluminum case is required, please add note “option 1” when ordering, for e.g., “Pockels cell driver DP-250-3.6-AI option 1”.

<sup>2)</sup> Standard aluminum case is suitable for water cooling. Alternative aluminum case (option 1) is suitable for both, conductive and water cooling.

Driver needs to be mounted on heatsink unless it is cooled by water. Driver’s base plate temperature needs to be lower than 35 °C in all regimes of operation. Power consumption for 6 pF load. Voltage or repetition rate derating is necessary if capacitance of your Pockels cell is higher. Contact vendor for details.

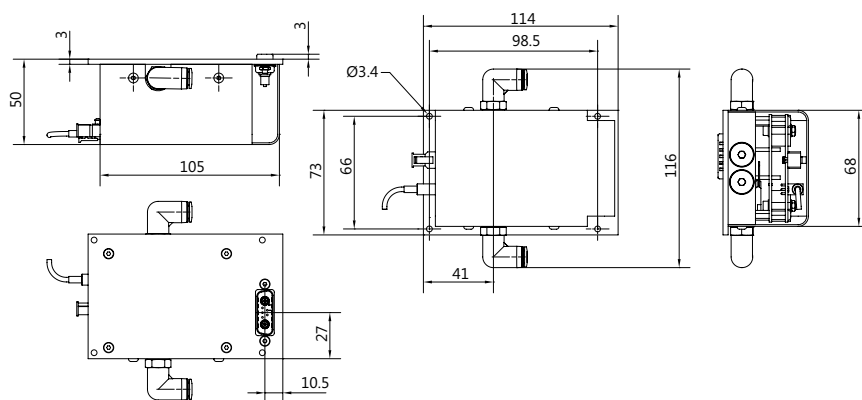


Fig. 15. Outline drawing of standard encased version DP/DP-SP series Pockels cell drivers